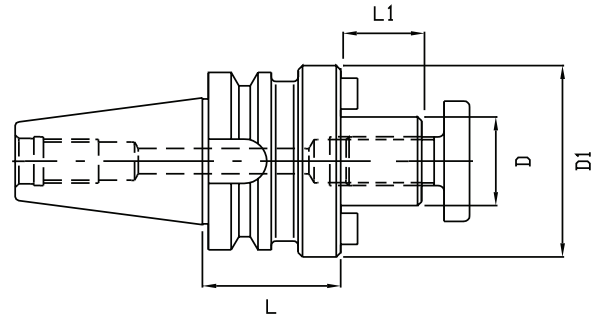
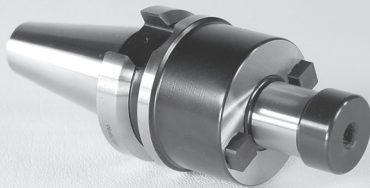


## BCV40 & BCV50 SHELL MILL HOLDERS

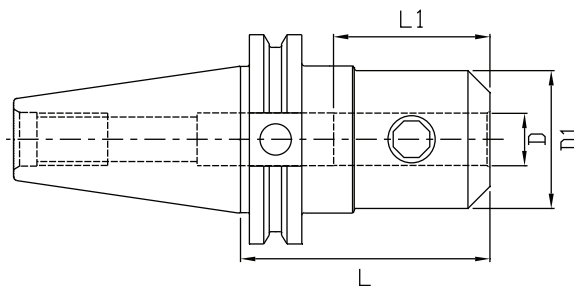
PART NUMBER	TAPER	ØD	ØD1	L	L1	KEY	ARBOR THREAD
BCV40-SM0750-1.75	BCV40	3/4"	1.75"	1.75"	.69"	5/16"	3/8-24
BCV40-SM0750-4.00	BCV40	3/4"	1.75"	4.00"	.69"	5/16"	3/8-24
BCV40-SM1000-1.75	BCV40	1"	2.21"	1.75"	.69"	3/8"	1/2-20
BCV40-SM1000-4.00	BCV40	1"	2.21"	4.00"	.69"	3/8"	1/2-20
BCV40-SM1250-2.36	BCV40	1-1/4"	2.75"	2.36"	.69"	1/2"	5/8-18
BCV40-SM1250-4.00	BCV40	1-1/4"	2.75"	4.00"	.69"	1/2"	5/8-18
BCV40-SM1500-2.36	BCV40	1-1/2"	3.38"	2.36"	.94"	5/8"	3/4-16
BCV40-SM1500-4.00	BCV40	1-1/2"	3.38"	4.00"	.94"	5/8"	3/4-16
BCV50-SM0750-4.00	BCV50	3/4"	1.75"	4.00"	.69"	5/16"	3/8-24
BCV50-SM0750-6.00	BCV50	3/4"	1.75"	6.00"	.69"	5/16"	3/8-24
BCV50-SM1000-4.00	BCV50	1"	2.21"	4.00"	.69"	3/8"	1/2-20
BCV50-SM1000-6.00	BCV50	1"	2.21"	6.00"	.69"	3/8"	1/2-20
BCV50-SM1250-4.00	BCV50	1-1/4"	2.75"	4.00"	.69"	1/2"	5/8-18
BCV50-SM1250-6.00	BCV50	1-1/4"	2.75"	6.00"	.69"	1/2"	5/8-18
BCV50-SM1500-4.00	BCV50	1-1/2"	3.38"	4.00"	.94"	5/8"	3/4-16
BCV50-SM1500-6.00	BCV50	1-1/2"	3.38"	6.00"	.94"	5/8"	3/4-16
BCV50-SM2000-4.00	BCV50	2"	4.88"	4.00"	.94"	3/4"	1-14
BCV50-SM2000-6.00	BCV50	2"	4.88"	6.00"	.94"	3/4"	1-14

• FORM B COOLANT THROUGH THE FLANGE IS AVAILABLE UPON REQUEST.



## BBT30 / BBT40 SHELL MILL HOLDERS

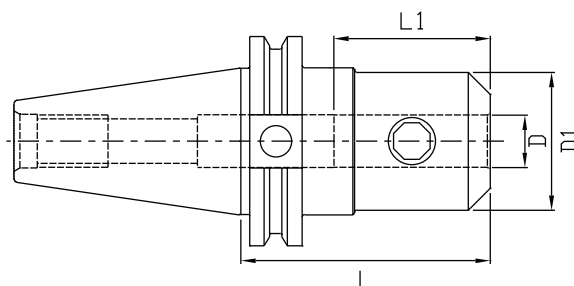
PART NUMBER	TAPER	ØD	ØD1	L	L1	KEY	ARBOR THREAD
BBT30-SM0500-1.18	BBT30	1/2"	1.44"	1.18"	.57"	1/4"	1/4-28
BBT30-SM0750-1.77	BBT30	3/4"	1.69"	1.77"	.69"	5/16"	3/8-24
BBT30-SM1000-1.77	BBT30	1"	2.21"	1.77"	.69"	3/8"	1/2-20
BBT40-SM0750-1.75	BBT40	3/4"	1.75"	1.75"	.69"	5/16"	3/8-24
BBT40-SM0750-4.00	BBT40	3/4"	1.75"	4.00"	.69"	5/16"	3/8-24
BBT40-SM1000-1.75	BBT40	1"	2.21"	1.75"	.69"	3/8"	1/2-20
BBT40-SM1000-4.00	BBT40	1"	2.21"	4.00"	.69"	3/8"	1/2-20
BBT40-SM1250-2.36	BBT40	1-1/4"	2.75"	2.36"	.69"	1/2"	5/8-18
BBT40-SM1250-4.00	BBT40	1-1/4"	2.75"	4.00"	.69"	1/2"	5/8-18
BBT40-SM1500-2.36	BBT40	1-1/2"	3.38"	2.36"	.94"	5/8"	3/4-16
BBT40-SM1500-4.00	BBT40	1-1/2"	3.38"	4.00"	.94"	5/8"	3/4-16



**BCV40 END MILL HOLDERS - INCH**

PART NUMBER	TAPER	ØD	ØD1	L	L1	SET SCREW	S.S. TORQUE
BCV40-EM0500-3.00	BCV40	1/2"	1.38"	3.00"	4.01"	EMS7/16-20	20 ft.lbs
BCV40-EM0500-5.00	BCV40	1/2"	1.38"	5.00"	5.51"	EMS7/16-20	20 ft.lbs
BCV40-EM0625-3.00	BCV40	5/8"	1.65"	3.00"	2.48"	EMS9/16-18	40 ft.lbs
BCV40-EM0625-5.00	BCV40	5/8"	1.65"	5.00"	3.56"	EMS9/16-18	40 ft.lbs
BCV40-EM0750-4.00	BCV40	3/4"	1.89"	4.00"	3.34"	EMS5/8-18	70 ft.lbs
BCV40-EM0750-6.00	BCV40	3/4"	1.89"	6.00"	3.93"	EMS5/8-18	70 ft.lbs
BCV40-EM1000-4.00	BCV40	1"	2.36"	4.00"	3.93"	EMS3/4-16	90 ft.lbs
BCV40-EM1000-6.00	BCV40	1"	2.36"	6.00"	4.42"	EMS3/4-16	90 ft.lbs
BCV40-EM1250-4.00	BCV40	1-1/4"	2.50"	4.00"	2.51"	EMS3/4-16	90 ft.lbs
BCV40-EM1250-6.00	BCV40	1-1/4"	2.50"	6.00"	2.51"	EMS3/4-16	90 ft.lbs
BCV40-EM1500-4.50	BCV40	1-1/2"	3.00"	4.50"	2.75"	EMS3/4-16	90 ft.lbs
BCV40-EM1500-6.00	BCV40	1-1/2"	3.00"	6.00"	2.75"	EMS3/4-16	90 ft.lbs

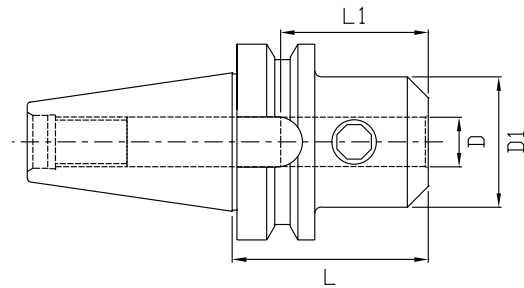
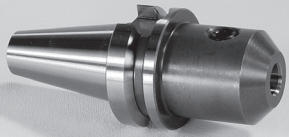
NOTES: • END MILL HOLDERS ARE PRE-BALANCED TO G2.5 @ 30,000RPM.  
• FORM B COOLANT THROUGH THE FLANGE IS AVAILABLE UPON REQUEST.



**BCV50 END MILL HOLDERS - INCH**

PART NUMBER	TAPER	ØD	ØD1	L	L1	SET SCREW	S.S. TORQUE
BCV50-EM0500-4.00	BCV50	1/2"	1.38"	4.00"	6.19"	EMS7/16-20	20 ft.lbs
BCV50-EM0500-6.00	BCV50	1/2"	1.38"	6.00"	8.19"	EMS7/16-20	20 ft.lbs
BCV50-EM0625-4.00	BCV50	5/8"	1.65"	4.00"	6.19"	EMS9/16-18	40 ft.lbs
BCV50-EM0625-6.00	BCV50	5/8"	1.65"	6.00"	8.19"	EMS9/16-18	40 ft.lbs
BCV50-EM0750-4.00	BCV50	3/4"	1.89"	4.00"	6.19"	EMS5/8-18	70 ft.lbs
BCV50-EM0750-6.00	BCV50	3/4"	1.89"	6.00"	8.19"	EMS5/8-18	70 ft.lbs
BCV50-EM1000-4.00	BCV50	1"	2.36"	4.00"	3.93"	EMS3/4-16	90 ft.lbs
BCV50-EM1000-6.00	BCV50	1"	2.36"	6.00"	4.42"	EMS3/4-16	90 ft.lbs
BCV50-EM1250-4.00	BCV50	1-1/4"	2.48"	4.00"	3.93"	EMS3/4-16	90 ft.lbs
BCV50-EM1250-6.00	BCV50	1-1/4"	2.48"	6.00"	3.93"	EMS3/4-16	90 ft.lbs
BCV50-EM1500-4.50	BCV50	1-1/2"	3.00"	4.50"	4.33"	EMS3/4-16	90 ft.lbs
BCV50-EM1500-6.00	BCV50	1-1/2"	3.00"	6.00"	4.33"	EMS3/4-16	90 ft.lbs
BCV50-EM2000-6.00	BCV50	2"	3.75"	6.00"	4.33"	EMS1-14	125 ft.lbs

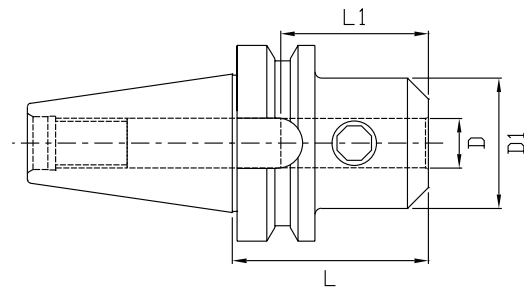
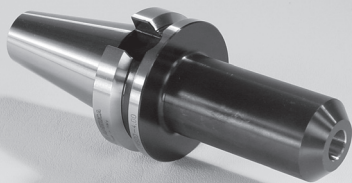
NOTES: • END MILL HOLDERS ARE PRE-BALANCED TO G2.5 @ 20,000RPM.  
• FORM B COOLANT THROUGH THE FLANGE IS AVAILABLE UPON REQUEST.



## BBT30 END MILL HOLDERS - INCH

PART NUMBER	TAPER	ØD	ØD1	L	L1	SET SCREW	S.S. TORQUE
BBT30-EM0125-2.50	BBT30	1/8"	.75"	2.50"	3.30"	EMS6-32	3 ft.lbs
BBT30-EM0250-2.50	BBT30	1/4"	.81"	2.50"	3.30"	EMS1/4-28	5 ft.lbs
BBT30-EM0375-2.50	BBT30	3/8"	1.00"	2.50"	3.30"	EMS3/8-24	15 ft.lbs
BBT30-EM0500-2.50	BBT30	1/2"	1.38"	2.50"	1.97"	EMS7/16-20	20 ft.lbs
BBT30-EM0625-2.50	BBT30	5/8"	1.65"	2.50"	2.09"	EMS9/16-18	40 ft.lbs
BBT30-EM0750-3.00	BBT30	3/4"	1.89"	3.00"	2.22"	EMS5/8-11	70 ft.lbs

NOTES: • END MILL HOLDERS ARE PRE-BALANCED TO G2.5 @ 30,000RPM.  
 • FORM B COOLANT THROUGH THE FLANGE IS AVAILABLE UPON REQUEST.



## BBT40 END MILL HOLDERS - INCH

PART NUMBER	TAPER	ØD	ØD1	L	L1	SET SCREW	S.S. TORQUE
BBT40-EM0500-3.00	BBT40	1/2"	1.38"	3.00"	4.01"	EMS7/16-20	20 ft.lbs
BBT40-EM0500-6.00	BBT40	1/2"	1.38"	6.00"	5.51"	EMS7/16-20	20 ft.lbs
BBT40-EM0625-3.00	BBT40	5/8"	1.65"	3.00"	2.48"	EMS9/16-18	40 ft.lbs
BBT40-EM0625-6.00	BBT40	5/8"	1.65"	6.00"	3.56"	EMS9/16-18	40 ft.lbs
BBT40-EM0750-3.00	BBT40	3/4"	1.89"	3.00"	3.34"	EMS5/8-18	70 ft.lbs
BBT40-EM0750-6.00	BBT40	3/4"	1.89"	6.00"	3.93"	EMS5/8-18	70 ft.lbs
BBT40-EM1000-4.00	BBT40	1"	2.36"	4.00"	3.93"	EMS3/4-16	90 ft.lbs
BBT40-EM1000-6.00	BBT40	1"	2.36"	6.00"	4.42"	EMS3/4-16	90 ft.lbs
BBT40-EM1250-4.00	BBT40	1-1/4"	2.50"	4.00"	2.51"	EMS3/4-16	90 ft.lbs
BBT40-EM1250-6.00	BBT40	1-1/4"	2.50"	6.00"	2.51"	EMS3/4-16	90 ft.lbs
BBT40-EM1500-4.50	BBT40	1-1/2"	3.00"	4.50"	2.75"	EMS3/4-16	90 ft.lbs
BBT40-EM1500-6.00	BBT40	1-1/2"	3.00"	6.00"	2.75"	EMS3/4-16	90 ft.lbs

NOTES: • END MILL HOLDERS ARE PRE-BALANCED TO G2.5 @ 30,000RPM.  
 • FORM B COOLANT THROUGH THE FLANGE IS AVAILABLE UPON REQUEST.